



European Standard Linear Bush Bearings

As the name is European Standard these sizes commonly used in European countries more. This is the most common form of a Linear Bush bearing. Common designs include Closed, adjustable, and open bearing.

Part Number:

European Standard Linear Bush Bearings

KH / LME** / LME**L / LME**AJ / LME**OP**

Flanged Type Linear Bush Bearings

LMEF / LMEF**L / LMEK** / LMEK**L**

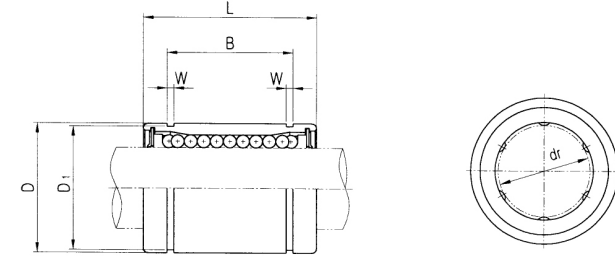
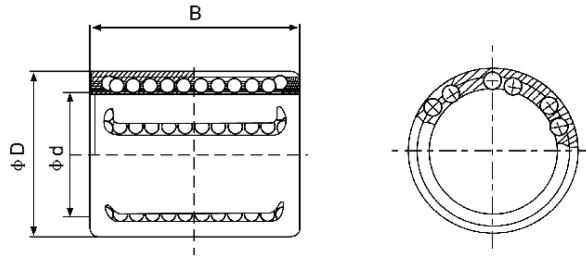
Pilot Flanged Type Linear Bush Bearings

LMEFP / LMEFP**L / LMEKP** / LMEKP**L**

Middle Flanged Type Linear Bush Bearings

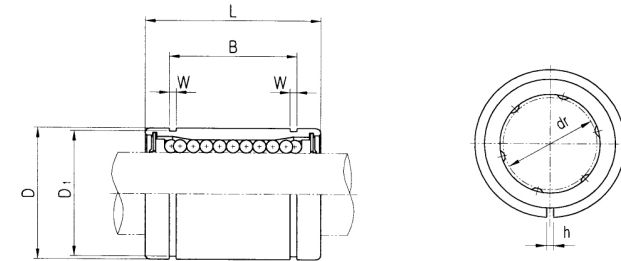
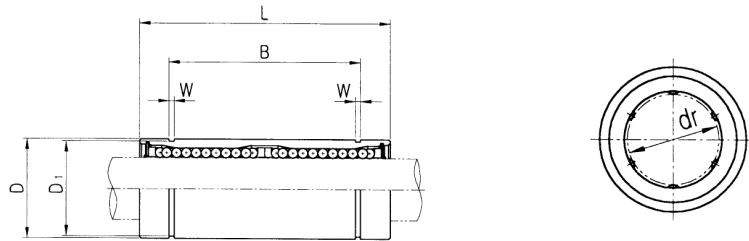
LMEFM / LMEKM****

Prefix and Corresponding Description for European Standard Linear Bush Bearings	
Prefix	Description of Prefix
LM	Linear Bushing
E	European Standard
F	Round Flange
K	Square Flange
H	Oval Flange
P	Pilot Location
M	Middle Location
Suffix and Corresponding Description for European Standard Linear Bush Bearings	
Suffix	Description of Suffix
Blank	Standard Length
L	Long Length
Blank	No Seal
U	One Side Seal
UU	Both Side Seal
AJ	Adjustable Type
OP	Open Type
Blank	No – Plating Standard
S	Stainless Steel



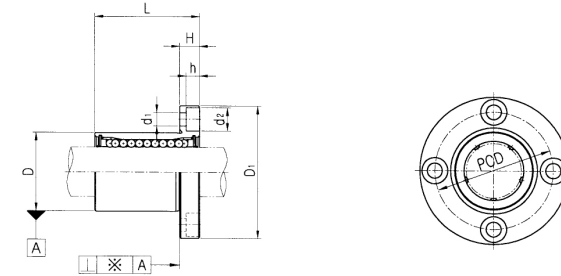
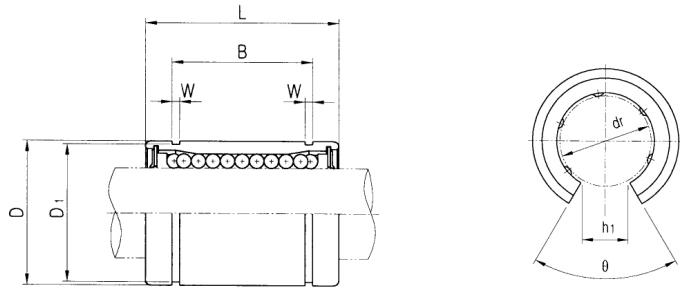
PART NUMBER	d	D	B	BASIC LOAD RATING (N)		WEIGHT
	mm	mm	mm	DYNAMIC (C)	STATIC (Co)	(g)
KH0622	6	12	22	400	239	7
KH0824	8	15	24	435	280	12
KH1026	10	17	26	500	370	14.5
KH1228	12	19	28	620	510	18.5
KH1428	14	21	28	620	520	20.5
KH1630	16	24	30	800	620	27.5
KH2030	20	28	30	950	790	32.5
KH2540	25	35	40	1990	1670	66
KH3050	30	40	50	2800	2700	95
KH4060	40	52	60	4400	4450	182
KH5070	50	62	70	5500	6300	252

PART NUMBER		DIA METER		D		L	B	W	D ₁	BASIC LOAD RATING (N)		NO.OF BALL CIRCUIT	WEIGHT (gf)
Resin	Steel	dr.	TOLERANCE	mm	TOLERANCE					DYNAMIC (C)	STATIC (Co)		
LME5	-	5	+0.008 0	12	0 -0.008	22	14.5	1.1	11.5	200	260	4	12
LME8	LME8-A	8	+0.008 0	16	0 -0.008	25	16.5	1.1	15.2	260	400	4	20
LME12	LME12-A	12	+0.008 0	22	0 -0.009	32	22.9	1.3	21	410	590	4	41
LME16	LME16-A	16	+0.009 -0.001	26	0 -0.009	36	24.9	1.3	24.9	770	1170	5	57
LME20	LME20-A	20	+0.009 -0.001	32	0 -0.011	45	31.5	1.6	30.3	860	1370	5	91
LME25	LME25-A	25	+0.011 -0.001	40	0 -0.011	58	44.1	1.85	37.5	980	1560	6	215
LME30	-	30	+0.011 -0.001	47	0 -0.011	68	52.1	1.85	44.5	1560	2740	6	325
LME40	-	40	+0.013 -0.002	62	0 -0.013	80	60.6	2.15	59	2150	4010	6	705
LME50	-	50	+0.013 -0.002	75	0 -0.013	100	77.6	2.65	72	3820	7930	6	1130
LME60	-	60	+0.013 -0.002	90	0 -0.015	125	101.7	3.15	86.5	4700	9990	6	2220



PART NUMBER		DIA METER		D		L	B	W	D ₁	BASIC LOAD RATING (N)		NO.OF BALL CIRCUIT	WEIGHT (gf)
Resin	Steel	dr.	TOLERANCE	mm	TOLERANCE					DYNAMIC (C)	STATIC (Co)		
LME8L	LME8L-A	8	+0.009 -0.001	16	0 -0.009	45	33	1.1	15.2	430	780	4	31
LME12L	LME12L-A	12	+0.009 -0.001	22	0 -0.011	57	45.8	1.3	21	650	1200	4	80
LME16L	LME16L-A	16	+0.011 -0.001	26	0 -0.011	70	49.8	1.3	24.9	1230	2350	5	145
LME20L	LME20L-A	20	+0.011 -0.001	32	0 -0.013	80	61	1.6	30.3	1400	2750	5	180
LME25L	LME25L-A	25	+0.013 -0.002	40	0 -0.013	112	82	1.85	38	1560	3140	6	440
LME30L	-	30	+0.013 -0.002	47	0 -0.013	123	104.2	1.85	44.5	2490	5490	6	580
LME40L	-	40	+0.016 -0.004	62	0 -0.015	154	121.2	2.15	59	3430	8040	6	1170
LME50L	-	50	+0.016 -0.004	75	0 -0.015	192	155.2	2.65	72	6080	15900	6	3100
LME60L	-	60	+0.016 -0.004	90	0 -0.020	211	170	3.15	86.5	7650	20000	6	3500

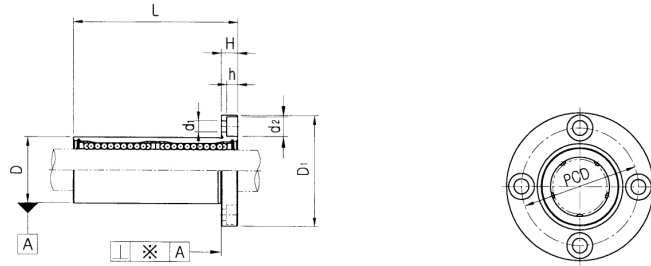
PART NUMBER		DIA METER		D		L	B	W	D ₁	h	BASIC LOAD RATING (N)		NO.OF BALL CIRCUIT	WEIGHT (gf)
Resin	Steel	dr.	TOLERANCE	mm	TOLERANCE						DYNAMIC (C)	STATIC (Co)		
LME5 AJ	-	5	+0.008 0	12	0 -0.008	22	14.5	1.1	11.5	1	200	260	4	12
LME8 AJ	LME8 AJ-A	8	+0.008 0	16	0 -0.008	25	16.5	1.1	15.2	1	260	400	4	20
LME12 AJ	LME12 AJ-A	12	+0.008 0	22	0 -0.009	32	22.9	1.3	21	1.5	410	590	4	41
LME16 AJ	LME16 AJ-A	16	+0.009 -0.001	26	0 -0.009	36	24.9	1.3	24.9	1.5	770	1170	5	57
LME20 AJ	LME20 AJ-A	20	+0.009 -0.001	32	0 -0.011	45	31.5	1.6	30.3	2	860	1370	5	91
LME25 AJ	LME25 AJ-A	25	+0.011 -0.001	40	0 -0.011	58	44.1	1.85	37.5	2	980	1560	6	215
LME30 AJ	-	30	+0.011 -0.001	47	0 -0.011	68	52.1	1.85	44.5	2	1560	2740	6	325
LME40 AJ	-	40	+0.013 -0.002	62	0 -0.013	80	60.6	2.15	59	3	2150	4010	6	705
LME50 AJ	-	50	+0.013 -0.002	75	0 -0.013	100	77.6	2.65	72	3	3820	7930	6	1130
LME60 AJ	-	60	+0.013 -0.002	90	0 -0.015	125	101.7	3.15	86.5	3	4700	9990	6	2220



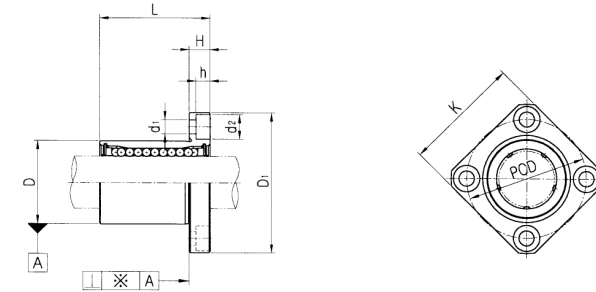
PART NUMBER		DIA METER		D		L	B	W	D ₁	h ₁	θ	BASIC LOAD RATING (N)		NO.OF BALL CIRCUIT	WEIGHT (gf)
Resin	Steel	dr.	TOLERANCE	mm	TOLERANCE							DYNAMIC (C)	STATIC (Co)		
LME12 OP	-	12	+0.008 0	22	0 -0.009	32	22.9	1.3	21	7.5	78°	410	590	3	41
LME16 OP	-	16	+0.009 -0.001	26	0 -0.009	36	24.9	1.3	24.9	10	78°	770	1170	4	57
LME20 OP	-	20	+0.009 -0.001	32	0 -0.011	45	31.5	1.6	30.3	10	60°	860	1370	4	91
LME25 OP	-	25	+0.011 -0.001	40	0 -0.011	58	44.1	1.85	37.5	12.5	60°	980	1560	5	215
LME30 OP	-	30	+0.011 -0.001	47	0 -0.011	68	52.1	1.85	44.5	12.5	50°	1560	2740	5	325
LME40 OP	-	40	+0.013 -0.002	62	0 -0.013	80	60.6	2.15	59	16.8	50°	2150	4010	5	705
LME50 OP	-	50	+0.013 -0.002	75	0 -0.013	100	77.6	2.65	72	21	50°	3820	7930	5	1130
LME60 OP	-	60	+0.013 -0.002	90	0 -0.015	125	101.7	3.15	86.5	27.2	54°	4700	9990	5	2220

PART NUMBER		DIA METER		D		L	D ₁	H	PCD	d ₁	d ₂	h	SQUARE NESS	BASIC LOAD RATING (N)		NO.OF BALL CIRCUIT	WEIGHT (gf)
Resin	Steel	dr.	TOLERANCE	mm	TOLERANCE									DYNAMIC (C)	STATIC (Co)		
LMEF8	LMEF8-A	8	+0.008 0	16	0 -0.008	25	32	5	24	3.4	6.5	3.3	12	260	400	4	44
LMEF12	LMEF12-A	12	+0.008 0	22	0 -0.009	32	42	6	32	4.5	8	4.4	12	410	590	4	86
LMEF16	LMEF16-A	16	+0.009 -0.001	26	0 -0.009	36	46	6	36	4.5	8	4.4	12	770	1170	5	120
LMEF20	LMEF20-A	20	+0.009 -0.001	32	0 -0.011	45	54	8	43	5.5	9.5	5.4	15	860	1370	5	184
LMEF25	LMEF25-A	25	+0.011 -0.001	40	0 -0.011	58	62	8	51	5.5	9.5	5.4	15	980	1560	6	335
LMEF30	-	30	+0.011 -0.001	47	0 -0.011	68	76	10	62	6.6	11	6.5	15	1560	2740	6	545
LMEF40	-	40	+0.013 -0.002	62	0 -0.013	80	98	13	80	9	14	8.6	20	2150	4010	6	1185
LMEF50	-	50	+0.013 -0.002	75	0 -0.013	100	112	13	94	9	14	8.6	20	3820	7930	6	1730
LMEF60	-	60	+0.013 -0.002	90	0 -0.015	125	134	18	112	11	17.5	10.8	25	4700	9990	6	3180

Flanged Type Linear Bush Bearings LMEF** L

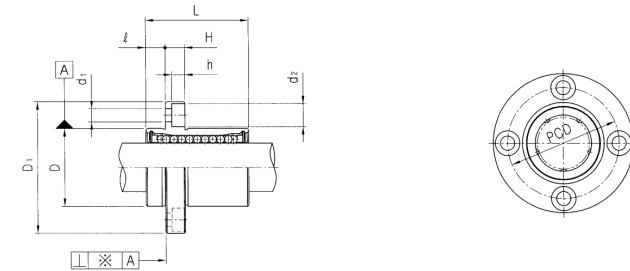
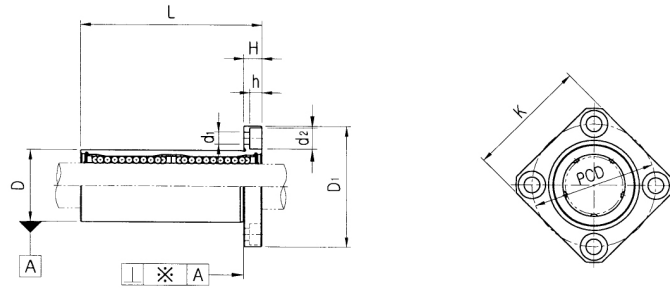


Flanged Type Linear Bush Bearings LMEK**



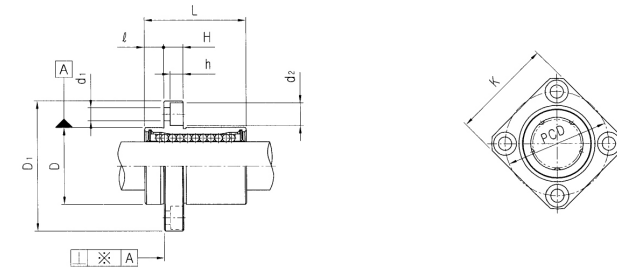
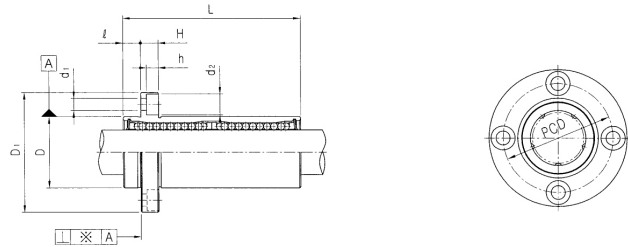
PART NUMBER		DIA METER		D		L	D ₁	H	PCD	d ₁	d ₂	h	SQUARENESS ※(μm)	BASIC LOAD RATING (N)		NO.OF BALL CIRCUIT	WEIGHT (gf)
Resin	Steel	dr.	TOLERANCE	mm	TOLERANCE									DYNAMIC (C)	STATIC (Co)		
LMEF8L	LMEF8L-A	8	+0.009 -0.001	16	0 -0.009	45	32	5	24	3.4	6.5	3.3	15	430	780	4	53
LMEF12L	LMEF12L-A	12	+0.009 -0.001	22	0 -0.0011	57	42	6	32	4.5	8	4.4	15	650	1200	4	100
LMEF16L	LMEF16L-A	16	+0.011 -0.001	26	0 -0.0011	70	46	6	36	4.5	8	4.4	15	1230	2350	5	187
LMEF20L	LMEF20L-A	20	+0.011 -0.001	32	0 -0.013	80	54	8	43	5.5	9.5	5.4	17	1400	2750	5	260
LMEF25L	LMEF25L-A	25	+0.013 -0.002	40	0 -0.013	112	62	8	51	5.5	9.5	5.4	17	1560	3140	6	515
LMEF30L	-	30	+0.013 -0.002	47	0 -0.013	123	76	10	62	6.6	11	6.5	17	2490	5490	6	655
LMEF40L	-	40	+0.016 -0.004	62	0 -0.015	154	98	13	80	9	14	8.6	20	3430	8040	6	1560
LMEF50L	-	50	+0.016 -0.004	75	0 -0.015	192	112	13	94	9	14	8.6	20	6080	15900	6	3500
LMEF60L	-	60	+0.016 -0.004	90	0 -0.020	211	134	18	112	11	17.5	10.8	30	7650	20000	6	4500

PART NUMBER		DIA METER		D		L	D ₁	H	PCD	K	d ₁	D ₂	h	SQUARENESS ※(μm)	BASIC LOAD RATING (N)		NO.OF BALL CIRCUIT	WEIGHT (gf)
Resin	Steel	dr.	TOLERANCE	mm	TOLERANCE										DYNAMIC (C)	STATIC (Co)		
LMEK8	LMEK8-A	8	+0.008 0	16	0 -0.008	25	32	5	24	25	3.4	6.5	3.3	12	260	400	4	44
LMEK12	LMEK12-A	12	+0.008 0	22	0 -0.009	32	42	6	32	32	4.5	8	4.4	12	410	590	4	86
LMEK16	LMEK16-A	16	+0.009 -0.001	26	0 -0.009	36	46	6	36	35	4.5	8	4.4	12	770	1170	5	120
LMEK20	LMEK20-A	20	+0.009 -0.001	32	0 -0.011	45	54	8	43	42	5.5	9.5	5.4	15	860	1370	5	184
LMEK25	LMEK25-A	25	+0.011 -0.001	40	0 -0.011	58	62	8	51	50	5.5	9.5	5.4	15	980	1560	6	335
LMEK30	-	30	+0.011 -0.001	47	0 -0.011	68	76	10	62	60	6.6	11	6.5	15	1560	2740	6	545
LMEK40	-	40	+0.013 -0.002	62	0 -0.013	80	98	13	80	75	9	14	8.6	20	2150	4010	6	1185
LMEK50	-	50	+0.013 -0.002	75	0 -0.013	100	112	13	94	88	9	14	8.6	20	3820	7930	6	1730
LMEK60	-	60	+0.013 -0.002	90	0 -0.015	125	134	18	112	106	11	17.5	10.8	25	4700	9990	6	3180



PART NUMBER		DIA METER		D		L	D ₁	H	PCD	K	d ₁	d ₂	h	SQUARENESS ※(μm)	BASIC LOAD RATING (N)		NO.OF BALL CIRCUIT	WEIGHT (gf)
Resin	Steel	dr.	TOLERANCE	mm	TOLERANCE										DYNAMIC (C)	STATIC (Co)		
LMEK8L	LMEK8L-A	8	+0.009 -0.001	16	0 -0.009	45	32	5	24	25	3.4	6.5	3.3	15	430	780	4	53
LMEK12L	LMEK12L-A	12	+0.009 -0.001	22	0 -0.0011	57	42	6	32	32	4.5	8	4.4	15	650	1200	4	100
LMEK16L	LMEK16L-A	16	+0.011 -0.001	26	0 -0.0011	70	46	6	36	35	4.5	8	4.4	15	1230	2350	5	187
LMEK20L	LMEK20L-A	20	+0.011 -0.001	32	0 -0.013	80	54	8	43	42	5.5	9.5	5.4	17	1400	2750	5	260
LMEK25L	LMEK25L-A	25	+0.013 -0.002	40	0 -0.013	112	62	8	51	50	5.5	9.5	5.4	17	1560	3140	6	515
LMEK30L	-	30	+0.013 -0.002	47	0 -0.013	123	76	10	62	60	6.6	11	6.5	17	2490	5490	6	655
LMEK40L	-	40	+0.016 -0.004	62	0 -0.015	154	98	13	80	75	9	14	8.6	20	3430	8040	6	1560
LMEK50L	-	50	+0.016 -0.004	75	0 -0.015	192	112	13	94	88	9	14	8.6	20	6080	15900	6	3500
LMEK60L	-	60	+0.016 -0.004	90	0 -0.020	211	134	18	112	106	11	17.5	10.8	30	7650	20000	6	4500

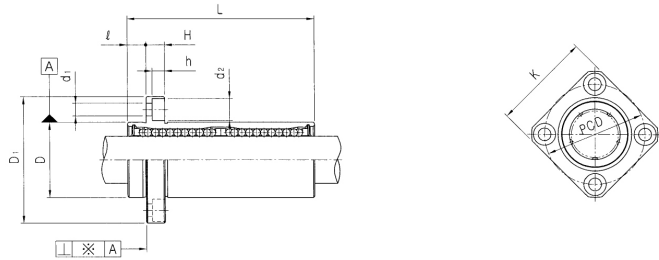
PART NUMBER		DIA METER		D		L	D ₁	l	H	PCD	d ₁	d ₂	h	SQUARENESS ※(μm)	BASIC LOAD RATING (N)		NO.OF BALL CIRCUIT	WEIGHT (gf)
Resin	Steel	dr.	TOLERANCE	mm	TOLERANCE										DYNAMIC (C)	STATIC (Co)		
LMEFP8	LMEFP8-A	8	+0.008 0	16	0 -0.008	25	32	5	5	24	3.4	6.5	3.3	12	260	400	4	44
LMEFP12	LMEFP12-A	12	+0.008 0	22	0 -0.009	32	42	6	6	32	4.5	8	4.4	12	410	590	4	86
LMEFP16	LMEFP16-A	16	+0.009 -0.001	26	0 -0.009	36	46	6	6	36	4.5	8	4.4	12	770	1170	5	120
LMEFP20	LMEFP20-A	20	+0.009 -0.001	32	0 -0.011	45	54	8	8	43	5.5	9.5	5.4	15	860	1370	5	184
LMEFP25	LMEFP25-A	25	+0.011 -0.001	40	0 -0.011	58	62	8	8	51	5.5	9.5	5.4	15	980	1560	6	335
LMEFP30	-	30	+0.011 -0.001	47	0 -0.011	68	76	10	10	62	6.6	11	6.5	15	1560	2740	6	545
LMEFP40	-	40	+0.013 -0.002	62	0 -0.013	80	98	13	13	80	9	14	8.6	20	2150	4010	6	1185
LMEFP50	-	50	+0.013 -0.002	75	0 -0.013	100	112	13	13	94	9	14	8.6	20	3820	7930	6	1730
LMEFP60	-	60	+0.013 -0.002	90	0 -0.015	125	134	18	18	112	11	17.5	10.8	25	4700	9990	6	3180



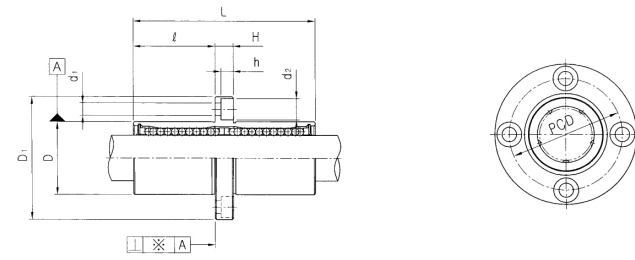
PART NUMBER		DIA METER		D		L	D ₁	ℓ	H	PCD	d ₁	d ₂	h	SQUARE NESS ※(μm)	BASIC LOAD RATING (N)		NO.OF BALL CIRCUIT	WEIGHT (gf)
Resin	Steel	dr.	TOLERANCE	mm	TOLERANCE										DYNAMIC (C)	STATIC (Co)		
LMEFP8L	LMEFP8L-A	8	+0.009 -0.001	16	0 -0.009	45	32	5	5	24	3.4	6.5	3.3	15	430	780	4	53
LMEFP12L	LMEFP12L-A	12	+0.009 -0.001	22	0 -0.011	57	42	6	6	32	4.5	8	4.4	15	650	1200	4	100
LMEFP16L	LMEFP16L-A	16	+0.011 -0.001	26	0 -0.011	70	46	6	6	36	4.5	8	4.4	15	1230	2350	5	187
LMEFP20L	LMEFP20L-A	20	+0.011 -0.001	32	0 -0.013	80	54	8	8	43	5.5	9.5	5.4	17	1400	2750	5	280
LMEFP25L	LMEFP25L-A	25	+0.013 -0.002	40	0 -0.013	112	62	8	8	51	5.5	9.5	5.4	17	1560	3140	6	515
LMEFP30L	-	30	+0.013 -0.002	47	0 -0.013	123	76	10	10	62	6.6	11	6.5	17	2490	5490	6	655
LMEFP40L	-	40	+0.016 -0.004	62	0 -0.015	154	98	13	13	80	9	14	8.6	20	3430	8040	6	1560
LMEFP50L	-	50	+0.016 -0.004	75	0 -0.015	192	112	13	13	94	9	14	8.6	20	6080	15900	6	3500
LMEFP60L	-	60	+0.016 -0.004	90	0 -0.020	211	134	18	18	112	11	17.5	10.8	30	7650	20000	6	4500

PART NUMBER		DIA METER		D		L	D ₁	ℓ	H	PCD	K	d ₁	d ₂	h	SQUARE NESS ※(μm)	BASIC LOAD RATING (N)		NO.OF BALL CIRCUIT	WEIGHT (gf)
Resin	Steel	dr.	TOLERANCE	mm	TOLERANCE											DYNAMIC (C)	STATIC (Co)		
LMEKP8	LMEKP8-A	8	+0.008 0	16	0 -0.008	25	32	5	5	24	25	3.4	6.5	3.3	12	260	400	4	44
LMEKP12	LMEKP12-A	12	+0.008 0	22	0 -0.009	32	42	6	6	32	32	4.5	8	4.4	12	410	590	4	86
LMEKP16	LMEKP16-A	16	+0.009 -0.001	26	0 -0.009	36	46	6	6	36	35	4.5	8	4.4	12	770	1170	5	120
LMEKP20	LMEKP20-A	20	+0.009 -0.001	32	0 -0.011	45	54	8	8	43	42	5.5	9.5	5.4	15	860	1370	5	184
LMEKP25	LMEKP25-A	25	+0.011 -0.001	40	0 -0.011	58	62	8	8	51	50	5.5	9.5	5.4	15	980	1560	6	335
LMEKP30	-	30	+0.011 -0.001	47	0 -0.011	68	76	10	10	62	60	6.6	11	6.5	15	1560	2740	6	545
LMEKP40	-	40	+0.013 -0.002	62	0 -0.013	80	98	13	13	80	75	9	14	8.6	20	2150	4010	6	1185
LMWKP50	-	50	+0.013 -0.002	75	0 -0.013	100	112	13	13	94	88	9	14	8.6	20	3820	7930	6	1730
LMEKP60	-	60	+0.013 -0.002	90	0 -0.015	125	134	18	18	112	106	11	17.5	10.8	25	4700	9990	6	3180

Pilot Flanged Type Linear Bush Bearings LMEKP**L

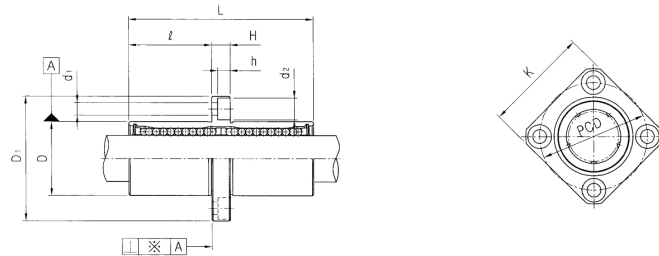


Middle Flanged Type Linear Bush Bearings LMEFM**



PART NUMBER		DIA METER		D		L	D ₁	ℓ	H	PCD	K	d ₁	d ₂	h	SQUARE NESS	BASIC LOAD RATING (N)		NO.OF BALL CIRCUIT	WEIGHT
Resin	Steel	dr.	TOLERANCE	mm	TOLERANCE										μm	DYNAMIC (C)	STATIC (Co)		(gf)
LMEKP8L	LMEKP8L-A	8	+0.009 -0.001	16	0 -0.009	45	32	5	5	24	25	3.4	6.5	3.3	15	430	780	4	53
LMEKP12L	LMEKP12L-A	12	+0.009 -0.001	22	0 -0.011	57	42	6	6	32	32	4.5	8	4.4	15	650	1200	4	100
LMEKP16L	LMEKP16L-A	16	+0.011 -0.001	26	0 -0.011	70	46	6	6	36	35	4.5	8	4.4	15	1230	2350	5	187
LMEKP20L	LMEKP20L-A	20	+0.011 -0.001	32	0 -0.013	80	54	8	8	43	42	5.5	9.5	5.4	17	1400	2750	5	260
LMEKP25L	LMEKP25L-A	25	+0.013 -0.002	40	0 -0.013	112	62	8	8	51	50	5.5	9.5	5.4	17	1560	3140	6	515
LMEKP30L	-	30	+0.013 -0.002	47	0 -0.013	123	76	10	10	62	60	6.6	11	6.5	17	2490	5490	6	655
LMEKP40L	-	40	+0.016 -0.004	62	0 -0.015	154	98	13	13	80	75	9	14	8.6	20	3430	8040	6	1560
LMEKP50L	-	50	+0.016 -0.004	75	0 -0.015	192	112	13	13	94	88	9	14	8.6	20	6080	15900	6	3500
LMEKP60L	-	60	+0.016 -0.004	90	0 -0.020	211	134	18	18	112	106	11	17.5	10.8	30	7650	20000	6	4500

PART NUMBER		DIA METER		D		L	D ₁	ℓ	H	PCD	K	d ₁	d ₂	h	SQUARE NESS	BASIC LOAD RATING (N)		NO.OF BALL CIRCUIT	WEIGHT
Resin	Steel	dr.	TOLERANCE	mm	TOLERANCE										μm	DYNAMIC (C)	STATIC (Co)		(gf)
LMEFM8	LMEFM8-A	8	+0.009 -0.001	16	0 -0.009	45	32	20	5	24	25	3.4	6.5	3.3	15	430	780	4	53
LMEFM12	LMEFM12-A	12	+0.009 -0.001	22	0 -0.011	57	42	25.5	6	32	32	4.5	8	4.4	15	650	1200	4	100
LMEFM16	LMEFM16-A	16	+0.011 -0.001	26	0 -0.011	70	46	32	6	36	35	4.5	8	4.4	15	1230	2350	5	187
LMEFM20	LMEFM20-A	20	+0.011 -0.001	32	0 -0.013	80	54	36	8	43	42	5.5	9.5	5.4	17	1400	2750	5	260
LMEFM25	LMEFM25-A	25	+0.013 -0.002	40	0 -0.013	112	62	52	8	51	50	5.5	9.5	5.4	17	1560	3140	6	515
LMEFM30	-	30	+0.013 -0.002	47	0 -0.013	123	76	56.5	10	62	60	6.6	11	6.5	17	2490	5490	6	655
LMEFM40	-	40	+0.016 -0.004	62	0 -0.015	154	98	70.5	13	80	75	9	14	8.6	20	3430	8040	6	1560
LMEFM50	-	50	+0.016 -0.004	75	0 -0.015	192	112	89.5	13	94	88	9	14	8.6	20	6080	15900	6	3500
LMEFM60	-	60	+0.016 -0.004	90	0 -0.020	211	134	96.5	18	112	106	11	17.5	10.8	30	7650	20000	6	4500



PART NUMBER		DIA METER		D		L	D ₁	l	H	PCD	K	d ₁	d ₂	h	SQUARE NESS	BASIC LOAD RATING (N)		NO. OF BALL CIRCUIT	WEIGHT
Resin	Steel	dr.	TOLERANCE	mm	TOLERANCE										μm	DYNAMIC (C)	STATIC (C ₀)		(gf)
LMEKM8	LMEKM8-A	8	+0.009 -0.001	16	0 -0.009	45	32	20	5	24	25	3.4	6.5	3.3	15	430	780	4	53
LMEKM12	LMEKM12-A	12	+0.009 -0.001	22	0 -0.011	57	42	25.5	6	32	32	4.5	8	4.4	15	650	1200	4	100
LMEKM16	LMEKM16-A	16	+0.011 -0.001	26	0 -0.011	70	46	32	6	36	35	4.5	8	4.4	15	1230	2350	5	187
LMEKM20	LMEKM20-A	20	+0.011 -0.001	32	0 -0.013	80	54	36	8	43	42	5.5	9.5	5.4	17	1400	2750	5	260
LMEKM25	LMEKM25-A	25	+0.013 -0.002	40	0 -0.013	112	62	52	8	51	50	5.5	9.5	5.4	17	1560	3140	6	515
LMEKM30	-	30	+0.013 -0.002	47	0 -0.013	123	76	56.5	10	62	60	6.6	11	6.5	17	2940	5490	6	655
LMEKM40	-	40	+0.016 -0.004	62	0 -0.015	154	98	70.5	13	80	75	9	14	8.6	20	3430	8040	6	1560
LMEKM50	-	50	+0.016 -0.004	75	0 -0.015	192	112	89.5	13	94	88	9	14	8.6	20	6080	15900	6	3500
LMEKM60	-	60	+0.016 -0.004	90	0 -0.020	211	134	96.5	18	112	106	11	17.5	10.8	30	7650	20000	6	4500

BMD