



Asian Standard Linear Bush Bearings:

As the name is Asian Standard these sizes commonly used in Asian countries more. This is the most common & widely used form of a Linear Bush bearing. Common designs include Closed, adjustable, and open bearing.

Part Number:

Asian Standard Linear Bush Bearings

LM** / LM**L / LM**AJ / LM**OP

Flanged Type Linear Bush Bearings

LMF** / LMF**L / LMK** / LMK**L / LMH** / LMH**L

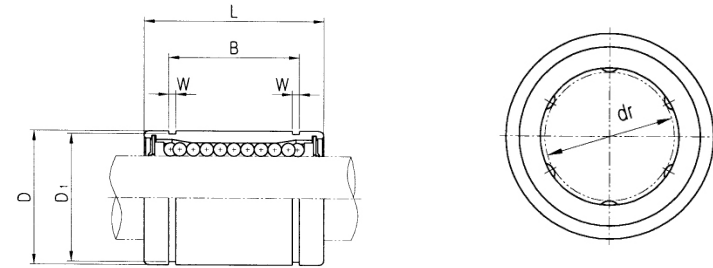
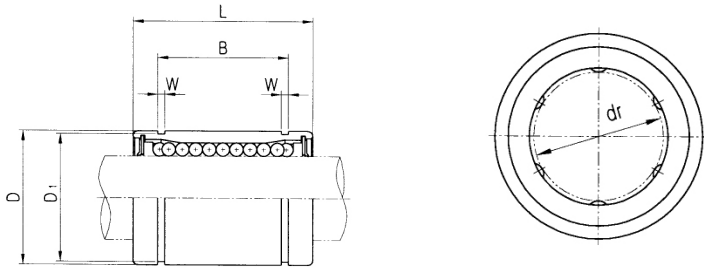
Pilot Flanged Type Linear Bush Bearings

LMFP** / LMFP**L / LMKP** / LMKP**L / LMHP** / LMHP**L

Middle Flanged Type Linear Bush Bearings

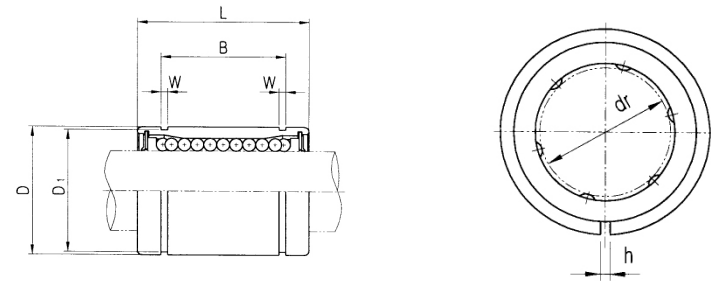
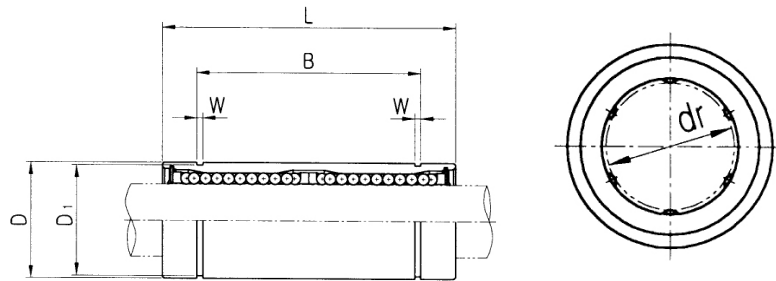
LMFM** / LMKM** / LMHM**

Prefix and Corresponding Description for Asian Standard Linear Bush Bearings	
Prefix	Description of Prefix
LM	Linear Bushing
Blank	Asian Standard
F	Round Flange
K	Square Flange
H	Oval Flange
P	Pilot Location
M	Middle Location
Suffix and Corresponding Description for Asian Standard Linear Bush Bearings	
Suffix	Description of Suffix
Blank	Standard Length
L	Long Length
Blank	No Seal
U	One Side Seal
UU	Both Side Seal
AJ	Adjustable Type
OP	Open Type
Blank	No – Plating Standard
S	Stainless Steel



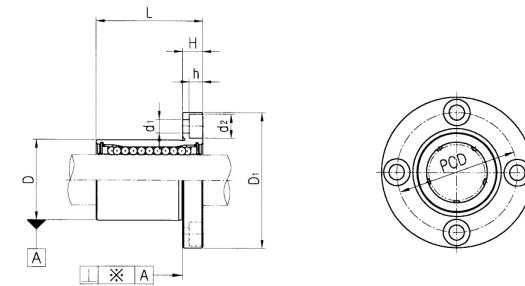
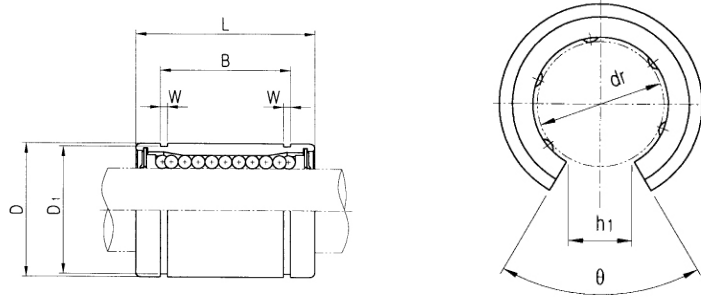
PART NUMBER		DIA METER		OUTER DIAMETER		L	B	W	D ₁	BASIC LOAD RATING(N)		NO.OF BALL CIRCUIT	WEIGHT (gf)
Resin	Steel	dr.	TOLERANCE	D	TOLERANCE					DYNAMIC(C)	STATIC(Co)		
LM5	-	5	⁰ / _{-0.008}	10	⁰ / _{-0.008}	15	10.2	1.1	9.6	167	206	4	4
LM6	LM6-A	6	⁰ / _{-0.009}	12	⁰ / _{-0.011}	19	13.5	1.1	11.5	200	260	4	8
LM8S	-	8	⁰ / _{-0.009}	15	⁰ / _{-0.011}	17	11.5	1.1	14.3	170	220	4	11
LM8	LM8-A	8	⁰ / _{-0.009}	15	⁰ / _{-0.011}	24	17.5	1.1	14.3	260	400	4	16
LM10	LM10-A	10	⁰ / _{-0.009}	19	⁰ / _{-0.013}	29	22.0	1.3	18	370	540	4	30
LM12	LM12-A	12	⁰ / _{-0.009}	21	⁰ / _{-0.013}	30	23.0	1.3	20	410	590	4	31.5
LM13	LM13-A	13	⁰ / _{-0.009}	23	⁰ / _{-0.013}	32	23.0	1.3	22	500	770	4	43
LM16	LM16-A	16	⁰ / _{-0.009}	28	⁰ / _{-0.013}	37	26.5	1.6	27	770	1170	5	69

PART NUMBER		DIA METER		OUTER DIAMETER		L	B	W	D ₁	BASIC LOAD RATING(N)		NO.OF BALL CIRCUIT	WEIGHT (gf)
Resin	Steel	dr.	TOLERANCE	D	TOLERANCE					DYNAMIC(C)	STATIC(Co)		
LM20	LM20-A	20	⁰ / _{-0.010}	32	⁰ / _{-0.016}	42	30.5	1.6	30.5	860	1370	5	87
LM25	LM25-A	25	⁰ / _{-0.010}	40	⁰ / _{-0.016}	59	41.0	1.85	38	980	1560	6	220
LM30	-	30	⁰ / _{-0.010}	45	⁰ / _{-0.016}	64	44.5	1.85	43	1560	2740	6	250
LM35	-	35	⁰ / _{-0.012}	52	⁰ / _{-0.019}	70	49.5	2.1	49	1660	3130	6	390
LM40	-	40	⁰ / _{-0.012}	60	⁰ / _{-0.019}	80	60.5	2.1	57	2150	4010	6	585
LM50	-	50	⁰ / _{-0.012}	80	⁰ / _{-0.019}	100	74.0	2.6	76.5	3820	7930	6	1580
LM60	-	60	⁰ / _{-0.015}	90	⁰ / _{-0.022}	110	85.0	3.15	86.5	4700	9990	6	2000
LM80	-	80	⁰ / _{-0.015}	120	⁰ / _{-0.022}	140	105.5	4.12	116	10130	12000	6	4100



PART NUMBER		DIA METER		OUTER DIAMETER		L	B	W	D ₁	BASIC LOAD RATING(N)		NO.OF BALL CIRCUIT	WEIGHT (gf)
Resin	Steel	dr.	TOLERANCE	D	TOLERANCE					DYNAMIC(C)	STATIC(Co)		
LM6L	LM6L-A	6	0 -0.010	12	0 -0.013	35	27	1.1	11.5	320	520	4	16
LM8L	LM8L-A	8	0 -0.010	15	0 -0.013	45	35	1.1	14.3	430	780	4	31
LM10L	LM10L-A	10	0 -0.010	19	0 -0.016	55	44	1.3	18	580	1100	4	62
LM12L	LM12L-A	12	0 -0.010	21	0 -0.016	57	46	1.3	20	650	1200	4	80
LM13L	LM13L-A	13	0 -0.010	23	0 -0.016	61	46	1.3	22	810	1570	4	90
LM16L	LM16L-A	16	0 -0.010	28	0 -0.016	70	53	1.6	27	1230	2350	5	145
LM20L	LM20L-A	20	0 -0.012	32	0 -0.019	80	61	1.6	30.5	1400	2750	5	180
LM25L	LM25L-A	25	0 -0.012	40	0 -0.019	112	82	1.85	38	1560	3140	6	440
LM30L	-	30	0 -0.012	45	0 -0.019	123	89	1.85	43	2490	5490	6	580
LM35L	-	35	0 -0.015	52	0 -0.022	135	99	2.1	49	2650	6470	6	795
LM40L	-	40	0 -0.015	60	0 -0.022	154	121	2.1	57	3430	8040	6	1170
LM50L	-	50	0 -0.015	80	0 -0.022	192	148	2.6	76.5	6080	15900	6	3100
LM60L	-	60	0 -0.020	90	0 -0.025	211	170	3.15	86.5	7650	20000	6	3500

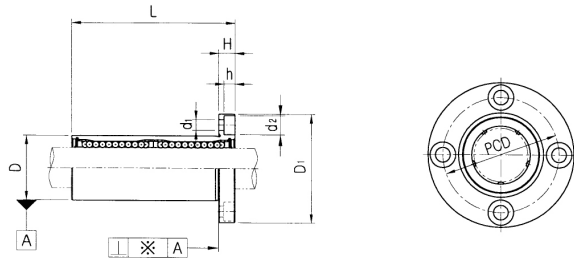
PART NUMBER		DIA METER		OUTER DIAMETER		L	B	W	h	D ₁	BASIC LOAD RATING(N)		NO.OF BALL CIRCUIT	WEIGHT (gf)
Resin	Steel	dr.	TOLERANCE	D	TOLERANCE						DYNAMIC(C)	STATIC(Co)		
LM6 AJ	LM6 AJ-A	6	0 -0.009	12	0 -0.011	19	13.5	1.1	1	11.5	200	260	4	8
LM8S AJ	LM8S AJ-A	8	0 -0.009	15	0 -0.011	17	11.5	1.1	1	14.3	170	220	4	11
LM8 AJ	LM8 AJ-A	8	0 -0.009	15	0 -0.011	24	17.5	1.1	1	14.3	260	400	4	16
LM10 AJ	LM10 AJ-A	10	0 -0.009	19	0 -0.013	29	22.0	1.3	1	18	370	540	4	30
LM12 AJ	LM12 AJ-A	12	0 -0.009	21	0 -0.013	30	23.0	1.3	1.5	20	410	590	4	31.5
LM13 AJ	LM13 AJ-A	13	0 -0.009	23	0 -0.013	32	23.0	1.3	1.5	22	500	770	4	43
LM16 AJ	LM16 AJ-A	16	0 -0.009	28	0 -0.013	37	26.5	1.6	1.5	27	770	1170	5	69
LM20 AJ	LM20 AJ-A	20	0 -0.010	32	0 -0.016	42	30.5	1.6	1.5	30.5	860	1370	5	87
LM25 AJ	LM25 AJ-A	25	0 -0.010	40	0 -0.016	59	41.0	1.85	2	38	980	1560	6	220
LM30 AJ	LM30 AJ-A	30	0 -0.010	45	0 -0.016	64	44.5	1.85	2.5	43	1560	2740	6	250
LM35 AJ	LM35 AJ-A	35	0 -0.012	52	0 -0.019	70	49.5	2.1	2.5	49	1660	3130	6	390
LM40 AJ	LM40 AJ-A	40	0 -0.012	60	0 0.019	80	60.5	2.1	3	57	2150	4010	6	585
LM50 AJ	LM50 AJ-A	50	0 -0.012	80	0 -0.019	100	74.0	2.6	3	76.5	3820	7930	6	1580
LM60 AJ	LM60 AJ-A	60	0 -0.015	90	0 -0.022	110	85.0	3.15	3	86.5	4700	9990	6	2000



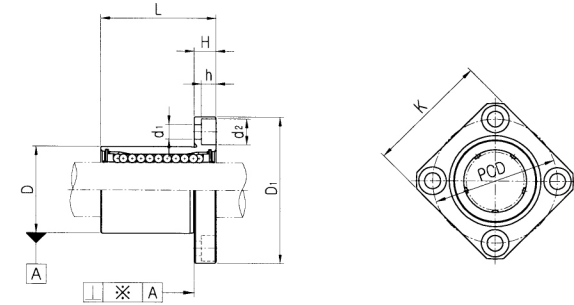
PART NUMBER		DIA METER		D	TOLERANCE	L	B	W	h ₁	θ	BASIC LOAD RATING(N)		NO.OF BALL CIRCUIT	WEIGHT (gf)
Resin	Steel	dr.	TOLERANCE								DYNAMIC (C)	STATIC (Co)		
LM12 OP	-	12	⁰ / _{-0.009}	21	⁰ / _{-0.013}	30	23.0	1.3	8	80	410	590	3	31.5
LM13 OP	-	13	⁰ / _{-0.009}	23	⁰ / _{-0.013}	32	23.0	1.3	9	80	500	770	3	43
LM16 OP	-	16	⁰ / _{-0.009}	28	⁰ / _{-0.013}	37	26.5	1.6	11	80	770	1170	4	69
LM20 OP	-	20	⁰ / _{-0.010}	32	⁰ / _{-0.016}	42	30.5	1.6	11	60	860	1370	4	87
LM25 OP	-	25	⁰ / _{-0.010}	40	⁰ / _{-0.016}	59	41.0	1.85	12	50	980	1560	5	220
LM30 OP	-	30	⁰ / _{-0.010}	45	⁰ / _{-0.016}	64	44.5	1.85	15	50	1560	2740	5	250
LM35 OP	-	35	⁰ / _{-0.012}	52	⁰ / _{-0.019}	70	49.5	2.1	17	50	1660	3130	5	390
LM40 OP	-	40	⁰ / _{-0.012}	60	⁰ / _{-0.019}	80	60.5	2.1	20	50	2150	4010	5	585
LM50 OP	-	50	⁰ / _{-0.012}	80	⁰ / _{-0.019}	100	74.0	2.6	25	50	3820	7930	5	1580
LM60 OP	-	60	⁰ / _{-0.015}	90	⁰ / _{-0.022}	110	85.0	3.15	30	50	4700	9990	5	2000

PART NUMBER		DIA METER		D	TOLERANCE	L	D ₁	H	PCD	d ₁	d ₂	h	SQUARENESS	BASIC LOAD RATING (N)		NO.OF BALL CIRCUIT	WEIGHT (gf)
Resin	Steel	dr.	TOLERANCE											DYNAMIC (C)	STATIC (Co)		
LMF6	LMF6-A	6	⁰ / _{-0.009}	12	⁰ / _{-0.011}	19	28	5	20	3.4	6.5	3.3	12	200	260	4	26.5
LMF8S	LMF8S-A	8	⁰ / _{-0.009}	15	⁰ / _{-0.011}	17	32	5	24	3.4	6.5	3.3	12	170	220	4	34
LMF8	LMF8-A	8	⁰ / _{-0.009}	15	⁰ / _{-0.011}	24	32	5	24	3.4	6.5	3.3	12	260	440	4	40
LMF10	LMF10-A	10	⁰ / _{-0.009}	19	⁰ / _{-0.013}	29	40	6	29	4.5	8.0	4.4	12	370	540	4	78
LMF12	LMF12-A	12	⁰ / _{-0.009}	21	⁰ / _{-0.013}	30	42	6	32	4.5	8.0	4.4	12	410	590	4	76
LMF13	LMF13-A	13	⁰ / _{-0.009}	23	⁰ / _{-0.013}	32	43	6	33	4.5	8.0	4.4	12	500	770	4	94
LMF16	LMF16-A	16	⁰ / _{-0.009}	28	⁰ / _{-0.013}	37	48	6	38	4.5	8.0	4.4	12	770	1170	5	134
LMF20	LMF20-A	20	⁰ / _{-0.010}	32	⁰ / _{-0.016}	42	54	8	43	5.5	9.5	5.4	15	860	1370	5	180
LMF25	LMF25-A	25	⁰ / _{-0.010}	40	⁰ / _{-0.016}	59	62	8	51	5.5	9.5	5.4	15	980	1560	6	340
LMF30	-	30	⁰ / _{-0.010}	45	⁰ / _{-0.016}	64	74	10	60	6.6	11.0	6.5	15	1560	2740	6	460
LMF35	-	35	⁰ / _{-0.012}	52	⁰ / _{-0.019}	70	82	10	67	6.6	11.0	6.5	20	1660	3130	6	795
LMF40	-	40	⁰ / _{-0.012}	60	⁰ / _{-0.019}	80	96	13	78	9.0	14.0	8.6	20	2150	4010	6	1054
LMF50	-	50	⁰ / _{-0.012}	80	⁰ / _{-0.019}	100	116	13	98	9.0	14.0	8.6	20	3820	7930	6	2200
LMF60	-	60	⁰ / _{-0.015}	90	⁰ / _{-0.022}	110	134	18	112	11.0	17.5	10.8	25	4700	9990	6	2960
LMF80	-	80	⁰ / _{-0.015}	120	⁰ / _{-0.022}	140	164	18	142	11.0	17.5	11.1	25	10130	12000	6	5400

Flanged Type Linear Bush Bearings LMF**L



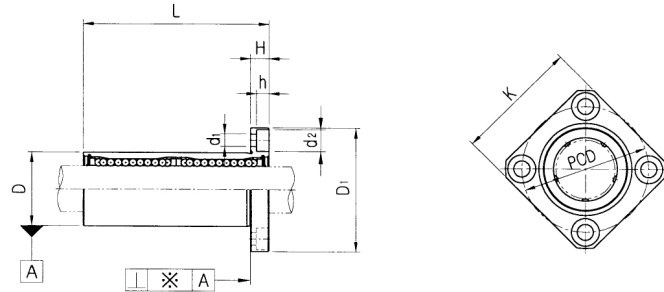
Flanged Type Linear Bush Bearings LMK**



PART NUMBER		DIA METER		D	TOLERANCE	L	D ₁	H	PCD	d ₁	d ₂	h	SQUARE NESS ※(μm)	BASIC LOAD RATING (N)		NO.OF BALL CIRCUIT	WEIGHT (gf)
Resin	Steel	dr.	TOLERANCE											DYNAMIC (C)	STATIC (Co)		
LMF6L	LMF6L-A	6	0 -0.010	12	0 -0.013	35	28	5	20	3.4	6.5	3.3	15	320	520	4	31
LMF8L	LMF8L-A	8	0 -0.010	15	0 -0.013	45	32	5	24	3.4	6.5	3.3	15	430	780	4	53
LMF10L	LMF10L-A	10	0 -0.010	19	0 -0.016	55	40	6	29	4.5	8.0	4.4	15	580	1100	4	105
LMF12L	LMF12L-A	12	0 -0.010	21	0 -0.016	57	42	6	32	4.5	8.0	4.4	15	650	1200	4	100
LMF13L	LMF13L-A	13	0 -0.010	23	0 -0.016	61	43	6	33	4.5	8.0	4.4	15	810	1570	4	130
LMF16L	LMF16L-A	16	0 -0.010	28	0 -0.016	70	48	6	38	4.5	8.0	4.4	15	1230	2350	5	187
LMF20L	LMF20L-A	20	0 -0.012	32	0 -0.019	80	54	8	43	5.5	9.5	5.4	20	1400	2750	5	260
LMF25L	LMF25L-A	25	0 -0.012	40	0 -0.019	112	62	8	51	5.5	9.5	5.4	20	1560	3140	6	515
LMF30L	-	30	0 -0.012	45	0 -0.019	123	74	10	60	6.6	11.0	6.5	20	2490	5490	6	655
LMF35L	-	35	0 -0.015	52	0 -0.022	135	82	10	67	6.6	11.0	6.5	25	2650	6470	6	970
LMF40L	-	40	0 -0.015	60	0 -0.022	154	96	13	78	9.0	14.0	8.6	25	3430	8040	6	1560
LMF50L	-	50	0 -0.015	80	0 -0.022	192	116	13	98	9.0	14.0	8.6	25	6080	15900	6	3500
LMF60L	-	60	0 -0.020	90	0 -0.025	211	134	18	112	11.0	17.5	10.8	25	7650	20000	6	4500

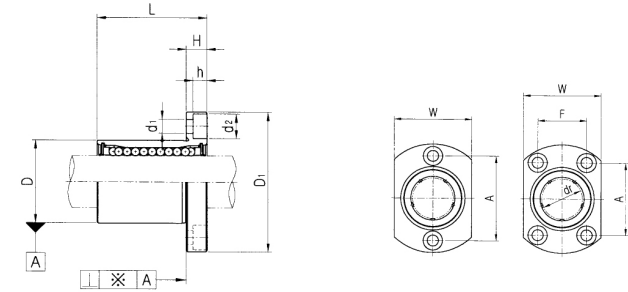
PART NUMBER		DIA METER		D	TOLERANCE	L	D ₁	H	PCD	K	d ₁	D ₂	h	SQUARE NESS ※(μm)	BASIC LOAD RATING (N)		NO.OF BALL CIRCUIT	WEIGHT (gf)
Resin	Steel	dr.	TOLERANCE												DYNAMIC (C)	STATIC (Co)		
LMK6	LMK6-A	6	0 -0.009	12	0 -0.011	19	28	5	20	22	3.4	6.5	3.3	12	200	260	4	26.5
LMK8S	LMK8S-A	8	0 -0.009	15	0 -0.011	17	32	5	24	25	3.4	6.5	3.3	12	170	220	4	34
LMK8	LMK8-A	8	0 -0.009	15	0 -0.011	24	32	5	24	25	3.4	6.5	3.3	12	260	400	4	40
LMK10	LMK10-A	10	0 -0.009	19	0 -0.013	29	40	6	29	30	4.5	8.0	4.4	12	370	540	4	78
LMK12	LMK12-A	12	0 -0.009	21	0 -0.013	30	42	6	32	32	4.5	8.0	4.4	12	410	590	4	76
LMK13	LMK13-A	13	0 -0.009	23	0 -0.013	32	43	6	33	34	4.5	8.0	4.4	12	500	770	4	94
LMK16	LMK16-A	16	0 -0.009	28	0 -0.013	37	48	6	38	37	4.5	8.0	4.4	12	770	1170	5	134
LMK20	LMK20-A	20	0 -0.010	32	0 -0.016	42	54	8	43	42	5.5	9.5	5.4	15	860	1370	5	180
LMK25	LMK25-A	25	0 -0.010	40	0 -0.016	59	62	8	51	50	5.5	9.5	5.4	15	980	1560	6	340
LMK30	-	30	0 -0.010	45	0 -0.016	64	74	10	60	58	6.6	11.0	6.5	15	1560	2740	6	460
LMK35	-	35	0 -0.012	52	0 -0.019	70	82	10	67	64	6.6	11.0	6.5	20	1660	3130	6	795
LMK40	-	40	0 -0.012	60	0 -0.019	80	96	13	78	75	9.0	14.0	8.6	20	2150	4010	6	1054
LMK50	-	50	0 -0.012	80	0 -0.019	100	116	13	98	92	9.0	14.0	8.6	20	3820	7930	6	2200
LMK60	-	60	0 -0.015	90	0 -0.022	110	134	18	112	106	11.0	17.5	10.8	25	4700	9990	6	2960
LMK80	-	80	0 -0.015	120	0 -0.022	140	164	18	142	136	11.0	17.5	11.1	25	10130	12000	6	4900

Flanged Type Linear Bush Bearings LMK**L



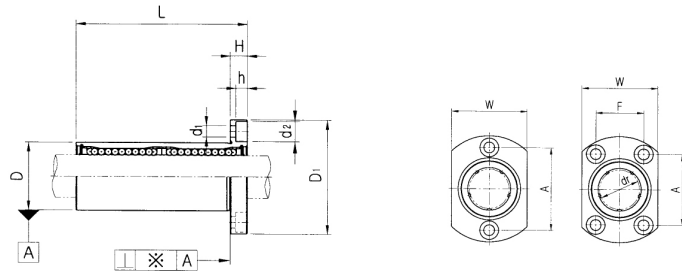
PART NUMBER		DIA METER		D	TOLERANCE	L	D ₁	H	PCD	K	d ₁	d ₂	h	SQUARENESS	BASIC LOAD RATING (N)		NO.OF BALL CIRCUIT	WEIGHT (gf)
Resin	Steel	dr.	TOLERANCE												DYNAMIC (C)	STATIC (Co)		
LMK6L	LMK6L-A	6	⁰ / _{-0.010}	12	⁰ / _{-0.013}	35	28	5	20	22	3.4	6.5	3.3	15	320	520	4	31
LMK8L	LMK8L-A	8	⁰ / _{-0.010}	15	⁰ / _{-0.013}	45	32	5	24	25	3.4	6.5	3.3	15	430	780	4	53
LMK10L	LMK10L-A	10	⁰ / _{-0.010}	19	⁰ / _{-0.016}	55	40	6	29	30	4.5	8.0	4.4	15	580	1100	4	105
LMK12L	LMK12L-A	12	⁰ / _{-0.010}	21	⁰ / _{-0.016}	57	42	6	32	32	4.5	8.0	4.4	15	650	1200	4	100
LMK13L	LMK13L-A	13	⁰ / _{-0.010}	23	⁰ / _{-0.016}	61	43	6	33	34	4.5	8.0	4.4	15	810	1570	4	130
LMK16L	LMK16L-A	16	⁰ / _{-0.010}	28	⁰ / _{-0.016}	70	48	6	38	37	4.5	8.0	4.4	15	1230	2350	5	187
LMK20L	LMK20L-A	20	⁰ / _{-0.012}	32	⁰ / _{-0.019}	80	54	8	43	42	5.5	9.5	5.4	20	1400	2750	5	260
LMK25L	LMK25L-A	25	⁰ / _{-0.012}	40	⁰ / _{-0.019}	112	62	8	51	50	5.5	9.5	5.4	20	1560	3140	6	515
LMK30L	-	30	⁰ / _{-0.012}	45	⁰ / _{-0.019}	123	74	10	60	58	6.6	11.0	6.5	20	2490	5490	6	655
LMK35L	-	35	⁰ / _{-0.015}	52	⁰ / _{-0.022}	135	82	10	67	64	6.6	11.0	6.5	25	2650	6470	6	970
LMK40L	-	40	⁰ / _{-0.015}	60	⁰ / _{-0.022}	154	96	13	78	75	9.0	14.0	8.6	25	3430	8040	6	1560
LMK50L	-	50	⁰ / _{-0.015}	80	⁰ / _{-0.022}	192	116	13	98	92	9.0	14.0	8.6	25	6080	15900	6	3500
LMK60L	-	60	⁰ / _{-0.020}	90	⁰ / _{-0.025}	211	134	18	112	106	11.0	17.5	10.8	25	7650	20000	6	4500

Flanged Type Linear Bush Bearings LMH**



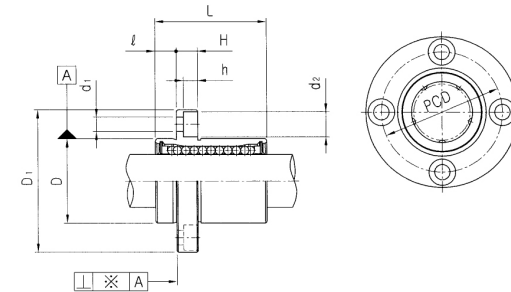
PART NUMBER		DIA METER		D	TOLERANCE	L	D ₁	H	W	A	F	d ₁	d ₂	h	SQUARENESS	BASIC LOAD RATING (N)		NO.OF BALL CIRCUIT	WEIGHT (gf)
Resin	Steel	dr.	TOLERANCE													DYNAMIC (C)	STATIC (Co)		
LMH6	LMH6-A	6	⁰ / _{-0.009}	12	⁰ / _{-0.011}	19	28	5	18	20	-	3.4	6.5	3.3	12	200	260	4	26.5
LMH8	LMH8-A	8	⁰ / _{-0.009}	15	⁰ / _{-0.011}	24	32	5	21	24	-	3.4	6.5	3.3	12	260	400	4	40
LMH10	LMH10-A	10	⁰ / _{-0.009}	19	⁰ / _{-0.013}	29	40	6	25	29	-	4.5	8.0	4.4	12	370	540	4	78
LMH12	LMH12-A	12	⁰ / _{-0.009}	21	⁰ / _{-0.013}	30	42	6	27	32	-	4.5	8.0	4.4	12	410	590	4	76
LMH13	LMH13-A	13	⁰ / _{-0.009}	23	⁰ / _{-0.013}	32	43	6	29	33	-	4.5	8.0	4.4	12	500	770	4	94
LMH16	LMH16-A	16	⁰ / _{-0.009}	28	⁰ / _{-0.013}	37	48	6	34	31	22	4.5	8.0	4.4	12	770	1170	5	134
LMH20	LMH20-A	20	⁰ / _{-0.010}	32	⁰ / _{-0.016}	42	54	8	38	36	24	5.5	9.5	5.4	15	860	1370	5	180
LMH25	LMH25-A	25	⁰ / _{-0.010}	40	⁰ / _{-0.016}	59	62	8	46	40	32	5.5	9.5	5.4	15	980	1560	6	340
LMH30	-	30	⁰ / _{-0.010}	45	⁰ / _{-0.016}	64	74	10	51	49	35	6.6	11.0	6.5	15	1560	2740	6	460

Flanged Type Linear Bush Bearings LMH**L



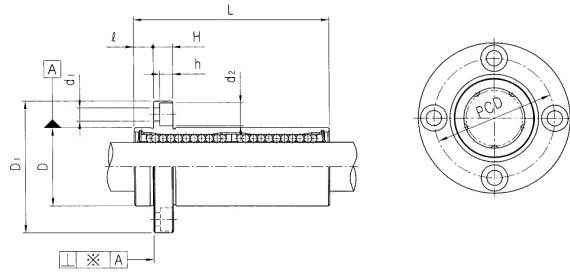
PART NUMBER		DIA METER		D	TOLERANCE	L	D ₁	H	W	A	F	d ₁	d ₂	h	SQUARE NESS	BASIC LOAD RATING (N)		NO.OF BALL CIRCUIT	WEIGHT (gf)
Resin	Steel	dr.	TOLERANCE													DYNAMIC (C)	STATIC (Co)		
LMH6L	LMH6L-A	6	0 -0.010	12	0 -0.013	35	28	5	18	20	-	3.4	6.5	3.3	15	320	520	4	31
LMH8L	LMH8L-A	8	0 -0.010	15	0 -0.013	45	32	5	21	24	-	3.4	6.5	3.3	15	430	780	4	53
LMH10L	LMH10L-A	10	0 -0.010	19	0 -0.016	55	40	6	25	29	-	4.5	8.0	4.4	15	580	1100	4	105
LMH12L	LMH12L-A	12	0 -0.010	21	0 -0.016	57	42	6	27	32	-	4.5	8.0	4.4	15	650	1200	4	100
LMH13L	LMH13L-A	13	0 -0.010	23	0 -0.016	61	43	6	29	33	-	4.5	8.0	4.4	15	810	1570	4	130
LMH16L	LMH16L-A	16	0 -0.010	28	0 -0.016	70	48	6	34	31	22	4.5	8.0	4.4	15	1230	2350	5	187
LMH20L	LMH20L-A	20	0 -0.012	32	0 -0.019	80	54	8	38	36	24	5.5	9.5	5.4	20	1400	2750	5	260
LMH25L	LMH25L-A	25	0 -0.012	40	0 -0.019	112	62	8	46	40	32	5.5	9.5	5.4	20	1560	3140	6	515
LMH30L	-	30	0 -0.012	45	0 -0.019	123	74	10	51	49	35	6.6	11.0	6.5	20	2490	5490	6	655

Pilot Flanged Type Linear Bush Bearings LMFP**

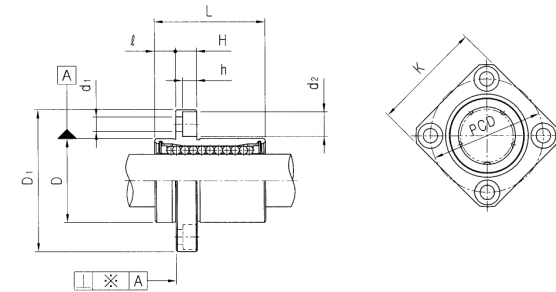


PART NUMBER		DIA METER		D	L	D ₁	ℓ	H	PCD	d ₁	d ₂	h	SQUARE NESS	BASIC LOAD RATING (N)		NO.OF BALL CIRCUIT	WEIGHT (gf)
Resin	Steel	dr.	TOLERANCE											DYNAMIC (C)	STATIC (Co)		
LMFP6	LMFP6-A	6	0 -0.009	12	0 -0.011	19	28	5	20	3.4	6.5	3.3	12	200	260	4	26.5
LMFP8	LMFP8-A	8	0 -0.009	15	0 -0.011	24	32	5	24	3.4	6.5	3.3	12	260	400	4	40
LMFP10	LMFP10-A	10	0 -0.009	19	0 -0.013	29	40	6	29	4.5	8	4.4	12	370	540	4	76
LMFP12	LMFP12-A	12	0 -0.009	21	0 -0.013	30	42	6	32	4.5	8	4.4	12	410	590	4	78
LMFP13	LMFP13-A	13	0 -0.009	23	0 -0.013	32	43	6	33	4.5	8	4.4	12	500	770	4	94
LMFP16	LMFP16-A	16	0 -0.009	28	0 -0.013	37	48	6	38	4.5	8	4.4	12	770	1170	5	134
LMFP20	LMFP20-A	20	0 -0.010	32	0 -0.016	42	54	8	43	5.5	9.5	5.4	15	860	1370	5	180
LMFP25	LMFP25-A	25	0 -0.010	40	0 -0.016	59	62	8	51	5.5	9.5	5.4	15	980	1560	6	340
LMFP30	-	30	0 -0.010	45	0 -0.016	64	74	10	60	6.6	11	6.5	15	1560	2740	6	460
LMFP35	-	35	0 -0.012	52	0 -0.019	70	82	10	67	6.6	11	6.5	20	1660	3130	6	795
LMFP40	-	40	0 -0.012	60	0 -0.019	80	96	13	78	9	14	8.6	20	2150	4010	6	1054
LMFP50	-	50	0 -0.012	80	0 -0.019	100	116	13	98	9	14	8.6	20	3820	7930	6	2200
LMFP60	-	60	0 -0.015	90	0 -0.022	110	134	18	112	11	17.5	10.8	25	4700	9990	6	2960

Pilot Flanged Type Linear Bush Bearings LMFP**L



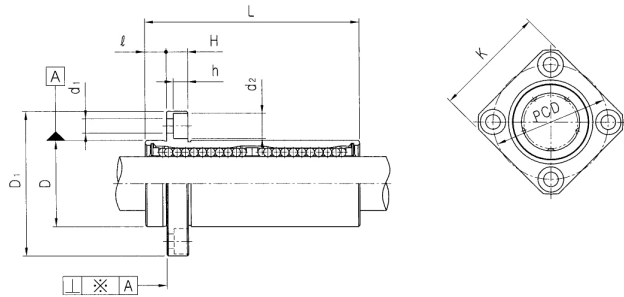
Pilot Flanged Type Linear Bush Bearings LMKP**



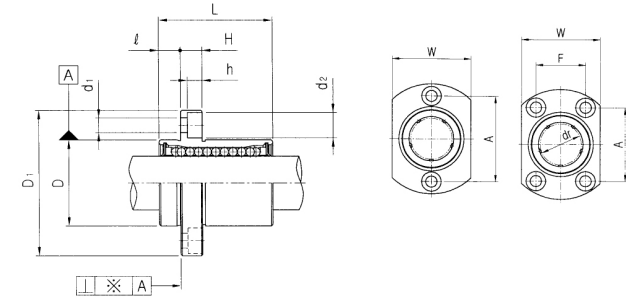
PART NUMBER		DIA METER		D		L	D ₁	l	H	PCD	d ₁	d ₂	h	SQUARE NESS ※(μm)	BASIC LOAD RATING (N)		NO.OF BALL CIRCUIT	WEIGHT (gf)
Resin	Steel	dr.	TOLERANCE	mm	TOLERANCE										DYNAMIC (C)	STATIC (Co)		
LMFP6L	LMFP6L-A	6	0 -0.010	12	0 0.013	35	28	5	5	20	3.4	6.5	3.3	15	320	520	4	31
LMFP8L	LMFP8L-A	8	0 -0.010	15	0 -0.013	45	32	5	5	24	3.4	6.5	3.3	15	430	780	4	53
LMFP10L	LMFP10L-A	10	0 -0.010	19	0 -0.016	55	40	6	6	29	4.5	8	4.4	15	580	1100	4	105
LMFP12L	LMFP12L-A	12	0 -0.010	21	0 -0.016	57	42	6	6	32	4.5	8	4.4	15	650	1200	4	100
LMFP13L	LMFP13L-A	13	0 -0.010	23	0 -0.016	61	43	6	6	33	4.5	8	4.4	15	810	1570	4	130
LMFP16L	LMFP16L-A	16	0 -0.010	28	0 -0.016	70	48	6	6	38	4.5	8	4.4	15	1230	2350	5	187
LMFP20L	LMFP20L-A	20	0 -0.012	32	0 -0.019	80	54	8	8	43	5.5	9.5	5.4	20	1400	2750	5	260
LMFP25L	LMFP25L-A	25	0 -0.012	40	0 -0.019	112	62	8	8	51	5.5	9.5	5.4	20	1560	3140	6	515
LMFP30L	-	30	0 -0.012	45	0 -0.019	123	74	10	10	60	6.6	11	6.5	20	2490	5490	6	655
LMFP35L	-	35	0 -0.015	52	0 -0.022	135	82	10	10	67	6.6	11	6.5	25	2650	6470	6	970
LMFP40L	-	40	0 -0.015	60	0 -0.022	154	96	13	13	78	9	14	8.6	25	3430	8040	6	1560
LMFP50L	-	50	0 -0.015	80	0 -0.022	192	116	13	13	98	9	14	8.6	25	6080	15900	6	3500
LMFP60L	-	60	0 -0.020	90	0 -0.025	211	134	18	18	112	11	17.5	10.8	25	7650	20000	6	4500

PART NUMBER		DIA METER		D		L	D ₁	l	H	PCD	K	d ₁	d ₂	h	SQUARE NESS ※(μm)	BASIC LOAD RATING (N)		NO.OF BALL CIRCUIT	WEIGHT (gf)
Resin	Steel	dr.	TOLERANCE	mm	TOLERANCE											DYNAMIC (C)	STATIC (Co)		
LMKP6	LMKP6-A	6	0 -0.009	12	0 -0.011	19	28	5	5	20	22	3.4	6.5	3.3	12	200	260	4	26.5
LMKP8	LMKP8-A	8	0 -0.009	15	0 -0.011	24	32	5	5	24	25	3.4	6.5	3.3	12	260	400	4	40
LMKP10	LMKP10-A	10	0 -0.009	19	0 -0.013	29	40	6	6	29	30	4.5	8	4.4	12	370	540	4	76
LMKP12	LMKP12-A	12	0 -0.009	21	0 -0.013	30	42	6	6	32	32	4.5	8	4.4	12	410	590	4	78
LMKP13	LMKP13-A	13	0 -0.009	23	0 -0.013	32	43	6	6	33	34	4.5	8	4.4	12	500	770	4	94
LMKP16	LMKP16-A	16	0 -0.009	28	0 -0.013	37	48	6	6	38	37	4.5	8	4.4	12	770	1170	5	134
LMKP20	LMKP20-A	20	0 -0.010	32	0 -0.016	42	54	8	8	43	42	5.5	9.5	5.4	15	860	1370	5	180
LMKP25	LMKP25-A	25	0 -0.010	40	0 -0.016	59	62	8	8	51	50	5.5	9.5	5.4	15	980	1560	6	340
LMKP30	-	30	0 -0.010	45	0 -0.016	64	74	10	10	60	58	6.6	11	6.5	15	1560	2740	6	460
LMKP35	-	35	0 -0.012	52	0 -0.019	70	82	10	10	67	64	6.6	11	6.5	20	1660	3130	6	795
LMKP40	-	40	0 -0.012	60	0 -0.019	80	96	13	13	78	75	9	14	8.6	20	2150	4010	6	1054
LMKP50	-	50	0 -0.012	80	0 -0.019	100	116	13	13	98	92	9	14	8.6	20	3820	7930	6	2200
LMKP60	-	60	0 -0.015	90	0 -0.022	110	134	18	18	112	106	11	17.5	10.8	25	4700	9990	6	2960

Pilot Flanged Type Linear Bush Bearings LMKP**L



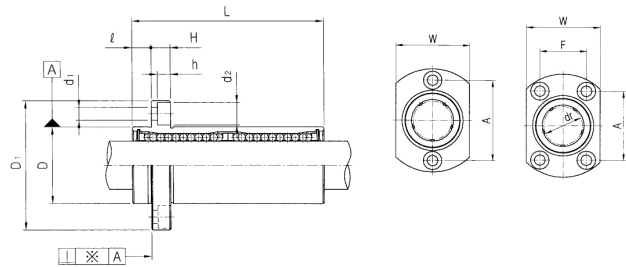
Pilot Flanged Type Linear Bush Bearings LMHP**



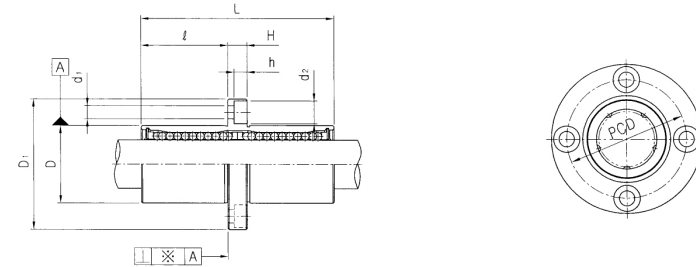
PART NUMBER		DIA METER		D		L	D ₁	l	H	PCD	K	d ₁	d ₂	h	SQUARE NESS % (μm)	BASIC LOAD RATING (N)		NO. OF BALL CIRCUIT	WEIGHT (gf)
Resin	Steel	dr.	TOLERANCE	mm	TOLERANCE											DYNAMIC (C)	STATIC (Co)		
LMKP6L	LMKP6L-A	6	0 -0.010	12	0 -0.013	35	28	5	5	20	22	3.4	6.5	3.3	15	320	520	4	31
LMKP8L	LMKP8L-A	8	0 -0.010	15	0 -0.013	45	32	5	5	24	25	3.4	6.5	3.3	15	430	780	4	53
LMKP10L	LMKP10L-A	10	0 -0.010	19	0 -0.016	55	40	6	6	29	30	4.5	8	4.4	15	580	1100	4	105
LMKP12L	LMKP12L-A	12	0 -0.010	21	0 -0.016	57	42	6	6	32	32	4.5	8	4.4	15	650	1200	4	100
LMKP13L	LMKP13L-A	13	0 -0.010	23	0 -0.016	61	43	6	6	33	34	4.5	8	4.4	15	810	1570	4	130
LMKP16L	LMKP16L-A	16	0 -0.010	28	0 -0.016	70	48	6	6	38	37	4.5	8	4.4	15	1230	2350	5	187
LMKP20L	LMKP20L-A	20	0 -0.012	32	0 -0.019	80	54	8	8	43	42	5.5	9.5	5.4	20	1400	2750	5	260
LMKP25L	LMKP25L-A	25	0 -0.012	40	0 -0.019	112	62	8	8	51	50	5.5	9.5	5.4	20	1560	3140	6	515
LMKP30L	-	30	0 -0.012	45	0 -0.019	123	74	10	10	60	58	6.6	11	6.5	20	2490	5490	6	655
LMKP35L	-	35	0 -0.015	52	0 -0.022	135	82	10	10	67	64	6.6	11	6.5	25	2650	6470	6	970
LMKP40L	-	40	0 -0.015	60	0 -0.022	154	96	13	13	78	75	9	14	8.6	25	3430	8040	6	1560
LMKP50L	-	50	0 -0.015	80	0 -0.022	192	116	13	13	98	92	9	14	8.6	25	6080	15900	6	3500
LMKP60L	-	60	0 -0.020	90	0 -0.025	211	134	18	18	112	106	11	17.5	10.8	25	7650	20000	6	4500

PART NUMBER		DIA METER		D		L	D ₁	l	H	W	A	F	d ₁	d ₂	h	SQUARE NESS % (μm)	BASIC LOAD RATING (N)		NO. OF BALL CIRCUIT	WEIGHT (gf)
Resin	Steel	dr.	TOLERANCE	mm	TOLERANCE												DYNAMIC (C)	STATIC (Co)		
LMHP6	LMHP6-A	6	0 -0.009	12	0 -0.011	19	28	5	5	18	20	-	3.4	6.5	3.3	12	200	260	4	26.5
LMHP8	LMHP8-A	8	0 -0.009	15	0 -0.011	24	32	5	5	21	24	-	3.4	6.5	3.3	12	260	400	4	40
LMHP10	LMHP10-A	10	0 -0.009	19	0 -0.013	29	40	6	6	25	29	-	4.5	8	4.4	12	370	540	4	76
LMHP12	LMHP12-A	12	0 -0.009	21	0 -0.013	30	42	6	6	27	32	-	4.5	8	4.4	12	410	590	4	78
LMHP13	LMHP13-A	13	0 -0.009	23	0 -0.013	32	43	6	6	29	33	-	4.5	8	4.4	12	500	770	4	94
LMHP16	LMHP16-A	16	0 -0.009	28	0 -0.013	37	48	6	6	34	31	22	4.5	8	4.4	12	770	1170	5	134
LMHP20	LMHP20-A	20	0 -0.010	32	0 -0.016	42	54	8	8	38	36	24	5.5	9.5	5.4	15	860	1370	5	180
LMHP25	LMHP25-A	25	0 -0.010	40	0 -0.016	59	62	8	8	46	40	32	5.5	9.5	5.4	15	980	1560	6	340
LMHP30	-	30	0 -0.010	45	0 -0.016	64	74	10	10	51	49	35	6.6	11	6.5	15	1560	2740	6	460

Pilot Flanged Type Linear Bush Bearings LMHP**L



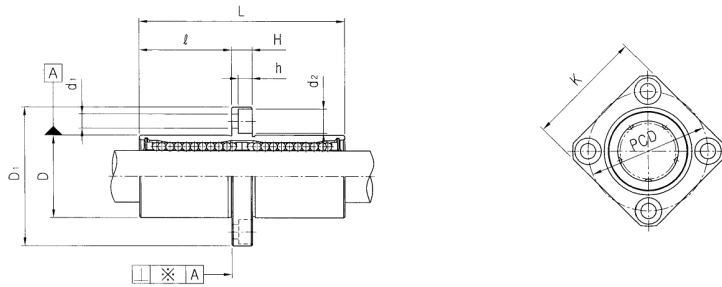
Middle Flanged Type Linear Bush Bearings LMFM**



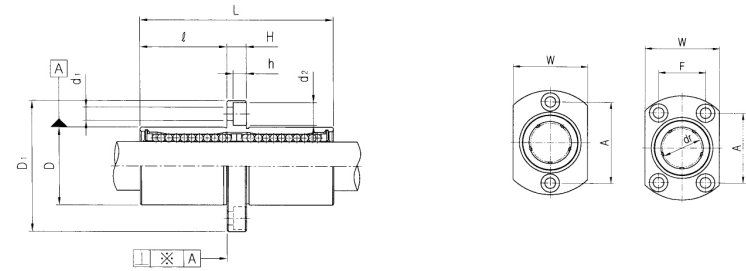
PART NUMBER		DIA METER		D		L	D ₁	ℓ	H	W	A	F	d ₁	d ₂	h	SQUARE NESS	BASIC LOAD RATING (N)		NO.OF BALL CIRCUIT	WEIGHT (gf)
Resin	Steel	dr.	TOLERANCE	mm	TOLERANCE										※(μm)	DYNAMIC (C)	STATIC (Co)			
LMHP6L	LMHP6L-A	6	0 -0.010	12	0 -0.013	35	28	5	5	18	20	-	3.4	6.5	3.3	15	320	520	4	31
LMHP8L	LMHP8L-A	8	0 -0.010	15	0 -0.013	45	32	5	5	21	24	-	3.4	6.5	3.3	15	430	780	4	53
LMHP10L	LMHP10L-A	10	0 -0.010	19	0 -0.016	55	40	6	6	25	29	-	4.5	8	4.4	15	580	1100	4	105
LMHP12L	LMHP12L-A	12	0 -0.010	21	0 0.016	57	42	6	6	27	32	-	4.5	8	4.4	15	650	1200	4	100
LMHP13L	LMHP13L-A	13	0 -0.010	23	0 -0.016	61	43	6	6	29	33	-	4.5	8	4.4	15	810	1570	4	130
LMHP16L	LMHP16L-A	16	0 -0.010	28	0 -0.016	70	48	6	6	34	31	22	4.5	8	4.4	15	1230	2350	5	187
LMHP20L	LMHP20L-A	20	0 -0.012	32	0 -0.019	80	54	8	8	38	36	24	5.5	9.5	5.4	20	1400	2750	5	260
LMHP25L	LMHP25L-A	25	0 -0.012	40	0 -0.019	112	62	8	8	46	40	32	5.5	9.5	5.4	20	1560	3140	6	515
LMHP30L	-	30	0 -0.012	45	0 -0.019	123	74	10	10	51	49	35	6.6	11	6.5	20	2940	5490	6	655

PART NUMBER		DIA METER		D		L	D ₁	ℓ	H	PCD	d ₁	d ₂	h	SQUARE NESS	BASIC LOAD RATING (N)		NO.OF BALL CIRCUIT	WEIGHT (gf)
Resin	Steel	dr.	TOLERANCE	mm	TOLERANCE									※(μm)	DYNAMIC (C)	STATIC (Co)		
LMFM6	KMFM6-A	6	0 -0.010	12	0 -0.011	35	28	15	5	20	3.4	6.5	3.3	15	320	520	4	31
LMFM8	KMFM8-A	8	0 -0.010	15	0 -0.011	45	32	20	5	24	3.4	6.5	3.3	15	430	780	4	53
LMFM10	LMFM10-A	10	0 -0.010	19	0 -0.013	55	40	24.5	6	29	4.5	8	4.4	15	580	1100	4	105
LMFM12	LMFM12-A	12	0 -0.010	21	0 -0.013	57	42	25.5	6	32	4.5	8	4.4	15	650	1200	4	100
LMFM13	LMFM13-A	13	0 -0.010	23	0 -0.013	61	43	27.5	6	33	4.5	8	4.4	15	810	1570	4	130
LMFM16	LMFM16-A	16	0 -0.010	28	0 -0.013	70	48	32	6	38	4.5	8	4.4	15	1230	2350	5	187
LMFM20	LMFM20-A	20	0 -0.012	32	0 -0.016	80	54	36	8	43	5.5	9.5	5.4	20	1400	2750	5	260
LMFM25	LMFM25-A	25	0 -0.012	40	0 -0.016	112	62	52	8	51	5.5	9.5	5.4	20	1560	3140	6	515
LMFM30	-	30	0 -0.012	45	0 -0.016	123	74	56.5	10	60	6.6	11	6.5	20	2490	5490	6	655
LMFM35	-	35	0 -0.015	52	0 -0.019	135	82	62.5	10	67	6.6	11	6.5	25	2650	6470	6	970
LMFM40	-	40	0 -0.015	60	0 -0.019	154	96	70.5	13	78	9	14	8.6	25	3430	8040	6	1560
LMFM50	-	50	0 -0.015	80	0 -0.019	192	116	89.5	13	98	9	14	8.6	25	6080	15900	6	3500
LMFM60	-	60	0 -0.020	90	0 -0.022	211	134	96.5	18	112	11	17.5	10.8	30	7650	20000	6	4500

Middle Flanged Type Linear Bush Bearings LMKM**



Middle Flanged Type Linear Bush Bearings LMHM**



PART NUMBER		DIA METER		D		L	D ₁	l	H	PCD	K	d ₁	d ₂	h	SQUARE NESS	BASIC LOAD RATING (N)		NO.OF BALL CIRCUIT	WEIGHT
Resin	Steel	dr.	TOLERANCE	mm	TOLERANCE										※(μm)	DYNAMIC (C)	STATIC (Co)		(gf)
LMKM6	LMKM6-A	6	0 -0.010	12	0 -0.013	35	28	15	5	20	22	3.4	6.5	3.3	15	320	520	4	31
LMKM8	LMKM8-A	8	0 -0.010	15	0 -0.013	45	32	20	5	24	25	3.4	6.5	3.3	15	430	780	4	53
LMKM10	LMKM10-A	10	0 -0.010	19	0 -0.016	55	40	24.5	6	29	30	4.5	8	4.4	15	580	1100	4	105
LMKM12	LMKM12-A	12	0 -0.010	21	0 -0.016	57	42	25.5	6	32	32	4.5	8	4.4	15	650	1200	4	100
LMKM13	LMKM13-A	13	0 -0.010	23	0 -0.016	61	43	27.5	6	33	34	4.5	8	4.4	15	810	1570	4	130
LMKM16	LMKM16-A	16	0 -0.010	28	0 -0.016	70	48	32	6	38	37	4.5	8	4.4	15	1230	2350	5	187
LMKM20	LMKM20-A	20	0 -0.012	32	0 -0.019	80	54	36	8	43	42	5.5	9.5	5.4	20	1400	2750	5	260
LMKM25	LMKM25-A	25	0 -0.012	40	0 -0.019	112	62	52	8	51	50	5.5	9.5	5.4	20	1560	3140	6	515
LMKM30	-	30	0 -0.012	45	0 -0.019	123	74	56.5	10	60	58	6.6	11	6.5	20	2940	5490	6	655
LMKM35	-	35	0 -0.015	52	0 -0.022	135	82	62.5	10	67	64	6.6	11	6.5	25	2650	6470	6	970
LMKM40	-	40	0 -0.015	60	0 -0.022	154	96	70.5	13	78	75	9	14	8.6	25	3430	8040	6	2560
LMKM50	-	50	0 -0.015	80	0 -0.022	192	116	89.5	13	98	92	9	14	8.6	25	6080	15900	6	3500
LMKM60	-	60	0 -0.020	90	0 -0.025	211	134	96.5	18	112	106	11	17.5	10.8	30	7650	20000	6	4500

PART NUMBER		DIA METER		D		L	D ₁	l	H	W	A	F	d ₁	d ₂	h	SQUARE NESS	BASIC LOAD RATING (N)		NO.OF BALL CIRCUIT	WEIGHT
Resin	Steel	dr.	TOLERANCE	mm	TOLERANCE											※(μm)	DYNAMIC (C)	STATIC (Co)		(gf)
LMHM6	LMHM6-A	6	0 -0.010	12	0 -0.013	35	28	15	5	18	20	-	3.4	6.5	3.3	15	320	520	4	31
LMHM8	LMHM8-A	8	0 -0.010	15	0 -0.013	45	32	20	5	21	24	-	3.4	6.5	3.3	15	430	780	4	53
LMHM10	LMHM10-A	10	0 -0.010	19	0 -0.016	55	40	24.5	6	25	29	-	4.5	8	4.4	15	580	1100	4	105
LMHM12	LMHM12-A	12	0 -0.010	21	0 -0.016	57	42	25.5	6	27	32	-	4.5	8	4.4	15	650	1200	4	100
LMHM13	LMHM13-A	13	0 -0.010	23	0 -0.016	61	43	27.5	6	29	33	-	4.5	8	4.4	15	810	1570	4	130
LMHM16	LMHM16-A	16	0 -0.010	28	0 -0.016	70	48	32	6	34	31	22	4.5	8	4.4	15	1230	2350	5	187
LMHM20	LMHM20-A	20	0 -0.012	32	0 -0.019	80	54	36	8	38	36	24	5.5	9.5	5.4	20	1400	2750	5	260
LMHM25	LMHM25-A	25	0 -0.012	40	0 -0.019	112	62	52	8	46	40	32	5.5	9.5	5.4	20	1560	3140	6	515
LMHM30	-	30	0 -0.012	45	0 -0.019	123	74	56.5	10	51	49	35	6.6	11	6.5	20	2940	5490	6	655